

## Meet Louis Chanu

Louis Chanu is a renowned South African sculptor whose artistic journey began in the studios of Cape Town decades ago. With a deep appreciation for form, function, and the transformative power of fire, Louis has dedicated his career to creating pieces that blur the line between art and utility.

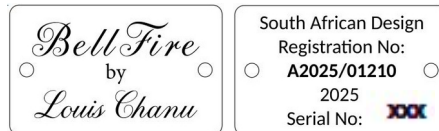
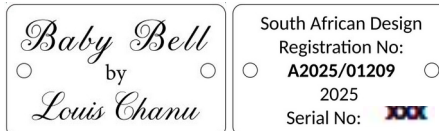
His background in fine arts, combined with years of metalworking experience, led to the revolutionary concept of the Soulfires Fireplace. Louis recognised that traditional fireplaces, while beautiful, often suffered from structural limitations and maintenance challenges.

"I wanted to create something that would last generations while bringing the primal beauty of fire into modern living spaces," says Louis. "Every curve, every weld, every detail is crafted with the intention of creating not just a fireplace, but a centerpiece that evolves with time.

Fire has always been humanity's companion. I simply wanted to honour that relationship with a vessel worthy of the flame."



Each fireplace is a handcrafted, functional art piece, identified by a unique serial number and artist stamp.



## Handcrafted Stainless Steel Fireplaces



### BABY BELL

#### Dimensions:

H 680 W 500 L 550 **29Kg**

**Flue** Standard 130mm  
(excludes flue kit)

**Material** 304 Stainless Steel

**Combustion chamber** 65 Litre

**Ash drawer** 8 Litre

**Output** 10 - 14kW

**Registered SA Design no:**

A2025/01209

### BELLFIRE

#### Dimensions:

H 1060 W 500 L 550 **34Kg**

**Flue** Standard 130mm  
(excludes flue kit)

**Material** 304 Stainless Steel

**Combustion Chamber** 95 Litre

**Ash drawer** 8 Litre

**Output** 12-17kW

**Registered SA Design no:**

A2025/01210

Soulfires International (Pty) Ltd

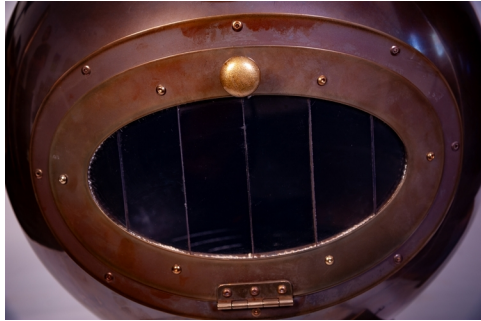
Cell / Whatsapp  
Sales 082 304 9696  
Support 072 134 5101

info@soulfires.co.za  
www.soulfires.co.za



## Construction

- 100% 304 grade stainless steel
- Advanced engineering
- Extremely long life-span
- Highly corrosion resistant
- Does not deform with high heat
- Attractive natural patina
- No paint or surface treatment
- Handcrafted in South Africa



## Cleaning & Maintenance

- Ash drawer can be easily removed
- Empty ash after 3 - 4 fires
- Wipe outside with damp cloth



## Operation

- Easy to light
- Heats up very quickly
- Extremely efficient: heats large spaces
- Economical: little wood, lots of heat
- Very effective heat control
- Operating temperature 200 - 350°C
- Burns any dry wood, including hardwood



## The Material Makes the Difference

While many fireplaces are made from mild steel and cast iron to save on costs, Soulfires fireplaces are crafted exclusively from high-grade 304 stainless steel. This premium material choice ensures your investment will provide decades of reliable, beautiful performance while actually improving with age.

The natural patina development is a self-maintaining finish that develops character over time. No smelly paint that needs regular treatments.



## Guarantee

- 12 Years on stainless steel construction. 5 Years on grate.
- Excludes glass and ceramic rope.
- Excludes damage due to incorrect installation, over-firing or non-recommended fuels.
- Please also note that Soulfires cannot be held responsible for incidental or consequential loss, damage, or injury.
- To prevent overheating, we recommend using a stove thermometer to help manage your fireplace temperature.

## Installation and Maintenance

Please note that Soulfires is a fireplace manufacturer, and does not do installations. We recommend that you contact a reputable fireplace and accessories retailer near you to assist. Professional installation and proper maintenance ensure optimal performance and safety.

## Important Warranty Information

The Soulfires warranty does not cover any defects in the installation of our fireplaces. It is important to use a qualified installer, who will ensure a durable and safe installation and give a warranty on the work.

## Ventilation

- Standard 130mm diameter chimney / flue.
- Good quality cowl required to prevent rain and down-draughts.
- Stainless steel flue recommended.
- Adequate room ventilation essential.

## Clearances

- From combustible material: 1000mm (unless fire proof padding is used)
- From non-combustible walls: 400mm
- Flue insulator required through ceilings/floors.

## Foundation

- Level, non-combustible floor required. Concrete, stone, ceramic tiles, metal acceptable. A fire proof pad or mat can be used on wooden floors.
- Load capacity: 30kg Heat-resistant pad needed on combustible flooring

## Maintenance Notes

### Flue / Chimney Maintenance

The flue / chimney should be swept by a qualified person once a year. This will remove accumulated build-up from the inside of the flue. Failure to do this may, as with any fireplace, cause a chimney fire. To reduce build-up inside the flue, it is important to burn dry, seasoned wood. Avoid burning wood with a high resin content, such as pine.

### Interior Cleaning

It's recommended to clean accumulated ash build-up inside the fireplace once a year. This will help to keep the air-flow working well.

### Exterior Care

Your Soulfires fireplace will develop an attractive bronze / gold patina on the outside. Do not attempt to remove this. Simply wipe with a damp cloth occasionally